

Student: _____
Date: _____
Time: _____

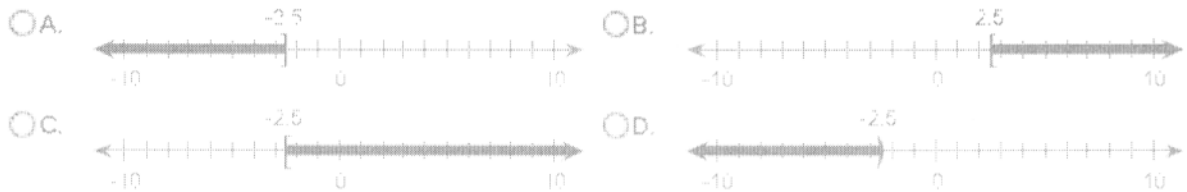
Instructor: courtney trabue
Course: GMC LSS Mathematics
Book: Martin-Gay: Developmental
Mathematics

Assignment: MAt 099 Interval Notation:
Domain & Range (16.5)

1. Graph the inequality on a number line. Then write the solution in interval notation.

$$\{x|x \leq -2.5\}$$

Select the correct graph below.



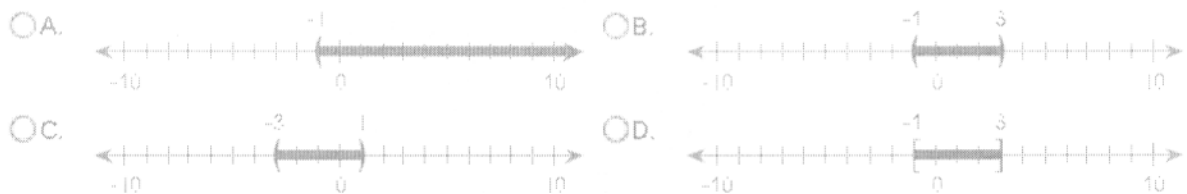
Select the correct interval notation below.

- A. $[2.5, \infty)$
 B. $[-2.5, \infty)$
 C. $(-\infty, -2.5)$
 D. $(-\infty, -2.5]$

2. Graph the inequality on a number line. Then write the solution in interval notation.

$$\{x|-1 < x < 3\}$$

Select the correct graph below.



Now enter the solution in interval notation.

Student: _____
Date: _____
Time: _____

Instructor: courtney trabue
Course: GMC LSS Mathematics
Book: Martin-Gay: Developmental
Mathematics

Assignment: MAt 099 Interval Notation:
Domain & Range (16.5)

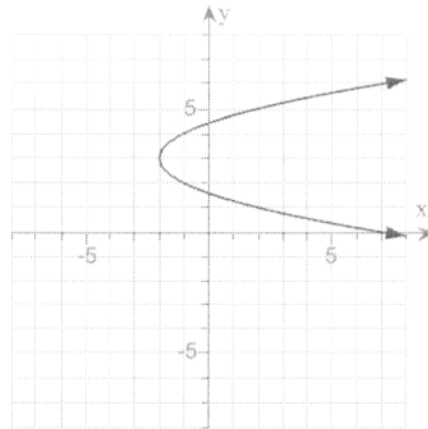
3. Find the domain and range of the relation.

Choose the correct domain.

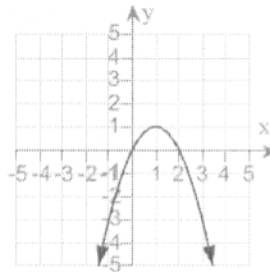
- A. $(-\infty, \infty)$ B. $[3, \infty)$
 C. $[-2, \infty)$ D. $(-2, \infty)$

Choose the correct range.

- A. $(-\infty, \infty)$ B. $(-2, \infty)$
 C. $[3, \infty)$ D. $[-2, \infty)$



4. Find the domain and range of the relation.



The domain is . (Type your answer in interval notation.)

The range is . (Type your answer in interval notation.)

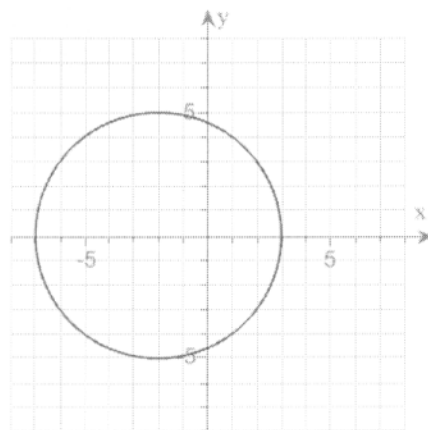
5. Find the domain and range of the relation.

Choose the correct domain.

- A. $[-7, 3]$ B. $[-5, 5]$
 C. $(-\infty, \infty)$ D. None of these.

Choose the correct range.

- A. $(-\infty, \infty)$ B. $[-7, 3]$
 C. $[-5, 5]$ D. None of these.



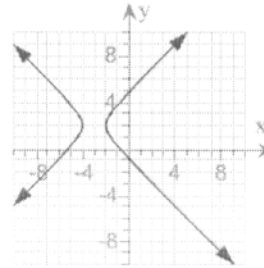
Student: _____
Date: _____
Time: _____

Instructor: courtney trabue
Course: GMC LSS Mathematics
Book: Martin-Gay: Developmental
Mathematics

Assignment: MAt 099 Interval Notation:
Domain & Range (16.5)

6.

Find the domain and range of the relation.



Choose the correct domain below.

- A. $[-4, -2]$
 B. $(-\infty, -4] \cup [-2, \infty)$
 C. $(-\infty, \infty)$
 D. None of the above

Choose the correct range below.

- A. $(-\infty, \infty)$
 B. $(-\infty, -4] \cup [-2, \infty)$
 C. $[-4, -2]$
 D. None of the above

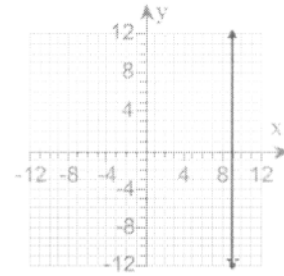
Student: _____
Date: _____
Time: _____

Instructor: courtney trabue
Course: GMC LSS Mathematics
Book: Martin-Gay: Developmental
Mathematics

Assignment: MAt 099 Interval Notation:
Domain & Range (16.5)

7.

Find the domain and the range of the relation.



Choose the correct domain.

- A. $(-\infty, 9) \cup (9, \infty)$ B. $\{9\}$
 C. $(-\infty, \infty)$ D. None of the above

Choose the correct range.

- A. $(-\infty, 9) \cup (9, \infty)$ B. $(-\infty, \infty)$
 C. $\{9\}$ D. None of the above

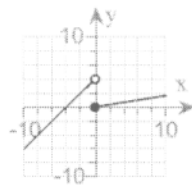
8.

Graph the function.

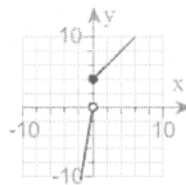
$$f(x) = \begin{cases} \frac{1}{6}x, & \text{for } x < 0 \\ x + 4, & \text{for } x \geq 0 \end{cases}$$

Choose the correct graph below.

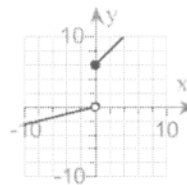
A.



B.



C.



D.

